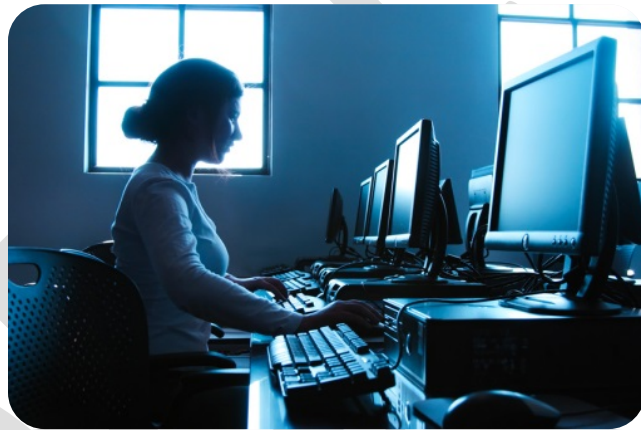


# 2017-2018 CalWORKs Vocational Program Guide



Los Rios CalWORKs Educational Program  
Los Rios Community College District

American River College  
Cosumnes River College  
Folsom Lake College  
Sacramento City College

# Introduction



The Los Rios Community College District includes American River College, Cosumnes River College, Folsom Lake College, and Sacramento City College. The Los Rios District receives funding through the California Community College Chancellor's Office to provide student support services, subsidized work study, and instruction for CalWORKs participants to help students transition from welfare to work. Programs and services are provided in collaboration with local welfare departments (e.g. Sacramento, Yolo, and El Dorado Counties).



The Los Rios Community College District works with each county welfare department to develop an annual list of approved vocational programs for CalWORKs participants. These programs prepare CalWORKs participants to transition from welfare to work. This guide is intended as a quick reference tool. It lists and cross-references Sacramento County (largest referring county) approved job titles to corresponding Los Rios programs of study that prepare students for these occupations. The guide does not replace information that is already provided in each of the Los Rios college catalogs. The current years' college catalog remains the complete and authoritative resource on vocational program content, course descriptions, units, prerequisites, and requirements.

## **Delia Orosco**

District CalWORKs Coordinator

For more information on Los Rios vocational classes and certificate/degree programs, please contact:

### **American River College**

CalWORKs Program  
4700 College Oak Drive  
Sacramento, CA 95841  
(916) 484-8059

### **Folsom Lake College**

CalWORKs Program  
100 Scholar Way  
Folsom, CA 95630  
(916) 608-6560

### **Cosumnes River College**

CalWORKs Program  
8401 Center Parkway  
Sacramento, CA 95823  
(916) 691-7465

### **Sacramento City College**

CalWORKs Program  
3835 Freeport Blvd  
Sacramento, CA 95822  
(916) 558-2331

### **District CalWORKs Office**

Los Rios Community College District  
1919 Spanos Court  
Sacramento, CA 95825  
(916) 568-3162



# How to Use this Guide

This guide contains the lists of most recent approved occupations for Sacramento County Department of Human Assistance and Yolo County Health and Human Services Agency. The approved occupational categories correspond to programs of study within Los Rios Community College District. The programs of study listing includes reference to whether or not there is a certificate, degree, or degree for transfer offered in that area at a particular college. It will also reference a county-specific approved occupation code. These AO codes can be looked up using the approved occupation lists for each county. These lists detail which codes correspond to the respective occupation. There may be program courses available at other colleges even if a certificate or degree is not available. This is intended to be a working guide for corresponding programs of study. There may be more than one applicable program of study for each occupation. Current year college catalogs should be used to determine specific course content, program descriptions, units, pre-requisites or other requirements. Continuous dialog between county human assistance departments and the Los Rios colleges' CalWORKs staff, educational counselors, and advisors is the best way to ensure adequate support and a sound educational planning that will lead to a student's success.



*It's about a better life for  
children and families.*

# APPROVED OCCUPATIONS AND PROGRAMS OF STUDY

These approved occupational training programs are available at the colleges of the Los Rios Community College District as certificate and/or degree programs.

The county approved occupational categories for SIPs and VTR lists are updated based on local Employment Development Department Labor Market Information Division and Occupational Research Group data primarily for entry-level jobs, as well as information from Los Rios Community College District, and the County Regional Occupational Program.

**NOTE:** DEGREE program units are those required in a MAJOR. To earn a degree the following must be completed:

1. Satisfactory completion of a minimum of 60 degree applicable units with a “C” (2.0) cumulative grade point average (GPA) in a curriculum that the district accepts toward the degree. At least 12 units must be earned at the college the student will graduate from.
2. Major: One of the degree programs listed in the college catalog with a minimum “C” grade in each course for the major.
3. Complete a minimum of 21-24 units of general education course work.
4. Demonstrate college-level competence in reading, written expression and mathematics.

Please also note that to earn a certificate, each course required for the certificate must be completed with a grade of “C” (or the equivalent) or better.

It is strongly recommended that students meet with an academic counselor at the college at which they plan to enroll, and complete a Student Educational Plan which will account for all the units necessary to achieve a particular goal.

Key:

D = Degree

C = Certificate

DT = Degree for Transfer

G = Green Occupations

\*\*Consult with a County Vocational Assessment Counselor for occupational options, specialized assessments, labor market information & planning recommendations

G=Green Occupations

D = Degree

C = Certificate

DT = Degree for Transfer

Colleges may offer coursework even if a degree/certificate is not indicated.

Consult an academic counselor/advisor.

\*\*Consult with a County Vocational Assessment Counselor for Occupational options, Specialized Assessments, Labor Market Information & planning recommendations.

## Sacramento County Approved Occupations List

AO Code	Approved Occupations	AO Code	Approved Occupations
1	Accountant & Auditors	35	Communications/Media Technology
2	Accounting Clerks	36	Computer Database Administrator
3	Administrative Assistant/Clerk	37	Computer Graphics Technician
4	Advertising Occupations	38	Computer Maintenance/Repair
5	Agricultural Business	39	Computer Operator
6	Agricultural Occupations (Seasonal)	40	Computer Parts Assembler
7	Aircraft Dispatcher	41	Computer Programmer/Aide
8	Apartment Manager/Property Manager	42	Computer Systems Analyst
9	Architecture Technology (G)	43	Concession/Coffee Shop Worker
10	Auditing Clerks	44	Construction - Various* (Carpenters*, Cabinet Makers*, Concrete/Masonry*, Iron & Rebar*, Brick Layers*, Stucco Framers*, Drywall/Plaster*, Taper*, Roofers*, Tile & Marble Setters)
11	Auto Body Painting & Repair	45	Cook/Chef
12	Auto Detailer	46	Correction Officer
13	Auto Parts Counter Person	47	Cost Estimator - Various Industries
14	Automotive Technology (Smog Technician)	48	Counter Attendants, Cafeteria, Food Service
15	Automotive/Watercraft Service Attendant	49	Counter Clerk/Checker/Cashier
16	Aviation Service Worker (Airport-Variou)	50	Customer Service Representative
17	Billing/Account Collections	51	Data Processor
18	Billing Cost/Rate Clerk	52	Delivery - Courier
19	Bookkeeper	53	Dental Assistant
20	Bread & Pastry Chef	54	Dental Hygienist/Dental Hygiene Assistant
21	Building Inspector	55	Desktop Publisher
22	Building & Maintenance Engineer/Technician	56	Diesel Mechanic (Various)/Clean Diesel Tech (G)
23	Bus/Van/Truck Driver	57	Dietitian/Nutritionist
24	Business	58	Digital Media Technician
25	Butcher/Meat Cutter	59	Dining Room, Cafeteria Attendants/Bartender Helpers
26	Call Center Operator	60	Dispatcher
27	Caregiver-Variou	61	Drafters, Engineering & Mapping Technicians
28	Carpet/Flooring Installer	62	Driver - Class "A" Licensed
29	Cashier	63	Early Childhood Education (Childcare, Teachers & Assistants)
30	Certified Nursing Assistant (CNA)	64	Electrician/Electrical Assistant (G)
31	Child Care (Early Childhood Caregivers & Assistants)	65	Electrical & Electronic Technician (G)
32	Clerical Worker-Variou	66	Electronics Assembler (G)
33	Clerk(Claims/General/Office/Payroll/Assistant/Rental/Shipping/Receiving/Stock/Order Filler)	67	Electronic Tester/Inspector (G)
34	Combined Food Prep & Servers, including Fast Food	68	Electronic Home Entertainment Installers & Repairers

G=Green Occupations

D = Degree

C = Certificate

DT = Degree for Transfer

Colleges may offer coursework even if a degree/certificate is not indicated.

Consult an academic counselor/advisor.

\*\*Consult with a County Vocational Assessment Counselor for Occupational options, Specialized Assessments, Labor Market Information & planning recommendations.

AO Code	Approved Occupations	AO Code	Approved Occupations
69	Emergency Medical Technician/Paramedic	99	Hospitality Occupations (Meeting/Convention/Event Planner)
70	Energy Auditor	100	Hotel, Motel & Resort Desk Clerk
71	Engineering Technicians	101	Housekeeper/Cleaner
72	Environmental Studies (G)	102	Human Resources/Personnel Workers
73	Equipment Operator (Maintenance/Repair)	103	Human Services (Social Services Workers/Community Studies, Chemical Dependency)
74	File Clerk	104	Instructional Aide
75	Financial Management Occupations	105	Insulation Worker/Construction
76	Fire Control Technician	106	Insurance Occupations
77	Fire Fighters	107	Interior Design Occupations/Green Industries (G)
78	Fire Technology Worker	108	Interpreter/Translator
79	First-Line Supervisors/Managers (Construction Trades, Food Service, Helpers, Housekeeping & Janitorial Workers, Laborers, Logistician, Material Movers, Office and Administrative, Production & Operating Workers, Retail Sales)	109	Janitor/Building Maintenance
80	Food Service (Cafeteria, Cashier, Counter Attendant, Bus Help, Dishwasher, Food Concession, Food Prep, Host/Hostess, Serving, Wait Staff)	110	Job Developer
81	Forestry Occupations	111	Laboratory Assistant/Technician
82	Forklift Operator	112	Laborer/Freight Stock (Construction, Material Movers)
83	Funeral Services Occupations	113	Landscape and Grounds Maintenance
84	Gaming Dealers, Machine Maintenance & Repair	114	Legal Support Workers/Clerical
85	Gardener/Groundskeeper	115	Library Worker
86	Gerontology Occupations	116	**Licensed Vocational Nurse
87	Glazier	117	Machinist-Variou Industries
88	Grocery Checker	118	Maids & Housekeeping
89	Hairdresser, Hairstylist & Cosmetologist, Barber	119	Maintenance Repair - Various Industries*
90	Hazardous Materials Technician	120	Managers - General/Operations
91	Healthcare IT Support Tech	121	Management Analyst
92	Health Information Technician	122	Manicurist/Pedicurist
93	Health Services Worker/Educator	123	Manufacturing Technology
94	Heating, Air Conditioning & Refridg. Mechanic/Installer (HVAC)	124	Marketing Research Analyst/Specialist
95	Heavy Equipment Operator	125	Mechanic (Auto*, Tire/Brake* Maintenance*, Small Motor/Motorcycle*, Agriculture*, Heavy Equipment/Bus & Truck)
96	Home Health Care Aide/CNA	126	Mechanical-Electrical Technology
97	Home Health Care Worker/In-Home Caregiver	127	Medical Lab Technician (Radiologist, Sonogram, Surgical, Ultra Sound, X-Ray)
98	Horticulture/Landscape Design (Tree Trimmer)	128	Medical Records Technician



G=Green Occupations  
 D = Degree  
 C = Certificate  
 DT = Degree for Transfer  
 Colleges may offer coursework even if a degree/certificate is not indicated.  
 Consult an academic counselor/advisor.

\*\*Consult with a County Vocational Assessment Counselor for Occupational options, Specialized Assessments, Labor Market Information & planning recommendations.

AO Code	Approved Occupations	AO Code	Approved Occupations
129	Medical Transcriber	167	Sales Clerk
130	Medical Secretary	168	Sales Representative
131	Mental Health Counselor (Alcohol/Drug Counselor)	169	Secretary (Administrative Assistant, Executive, General, Legal, Medical)
132	Merchandiser - Retail	170	Security & Fire Alarm Systems Installers
133	Nursing Aide/Orderlies/Attendant	171	Security Officer/Watch Guard
134	Nutritionist/Dietitian	172	Shipping & Receiving Clerk
135	**Occupational Therapy	173	Sign Language Assistant
136	**Occupational Therapy Assistant	174	Social Worker
137	Office Administrator	175	Solar Technology (Solar Assembly/Repair/Sales) (G)
138	Office Assistant/Technician	176	Sonogram Technician
139	Office Information Systems Worker	177	Speech/Language Pathology Assistant
140	Office Manager	178	Surgical Technician
141	Optical Assistant	179	Survey Technician
142	Painters-Construction Industry	180	Tax Assistant (Seasonal)
143	Paralegal & Legal Assistant	181	Teacher - Primary, Secondary, Special Education
144	Paramedic/Emergency Medical Technician	182	Teacher Assistant
145	Payroll Clerk/Assistant	183	Telecommunications Technician
146	Personal & Home Care Aides	184	Telephone/Cable Line Installation & Repair
147	Personnel Clerk/Assistant	185	Teller
148	Pest Controller Assistant	186	Training/Development Specialist
149	Pharmacy Technician	187	Travel/Tourism Worker
150	Physical Therapist	188	Ultra Sound Technician (Diagnostic)
151	Physical Therapy Aide/Assistant	189	Ushers, Lobby Attendants & Ticket Takers
152	Plumber	190	Vehicle Sales
153	Police & Sheriff's Patrol Officer	191	Vehicle Washer/Equipment Cleaner
154	Power Line Worker	192	Veterinary Assistant
155	Pre-School Teacher/Aide	193	Veterinary Technician
156	Probation Assistant	194	Veterinary/Animal Health Technician
157	Property Manager/Apartment Manager	195	**Vocational Nurse/LVN
158	**Psychiatric Technician Assistant	196	Waitress & Waiter
159	Public Relations	197	Warehouse Worker
160	Receptionist & Information Clerks	198	**Water & Liquid Waste Treatment Plant & System Operators (G)
161	Recreation/Leisure Occupations	199	**Webmaster/Technician
162	Refuse & Recyclable Materials Collectors (G)	200	**Welder, Cutter, Solderer & Brazier
163	**Registered Nurse	201	Wholesale/Retail Buyer
164	Reservation & Transportation/Ticket Agent/Travel Clerks	202	Word Processor
165	Respiratory Therapist/Aid	203	X-Ray Technician
166	Retail Sales		

G=Green Occupations

D = Degree

C = Certificate

DT = Degree for Transfer

Colleges may offer coursework even if a degree/certificate is not indicated.

Consult an academic counselor/advisor.

\*\*Consult with a County Vocational Assessment Counselor for Occupational options, Specialized Assessments, Labor Market Information & planning recommendations.

## Yolo County Approved Occupations List

AO Code	Approved Occupations	AO Code	Approved Occupations
1	Account Clerk	41	Food Service Manager
2	Administrative Assistant	42	Forklift/ Industrial Truck Operator
3	Advertising Manager	43	Gerontologist
4	Alcohol/Drug Counselor	44	Green Building/Environmental Design
5	Animal Health Tech/ Veterinary Assistant	45	Groundskeeper
6	Auditor	46	Hazardous Materials Technician/ Worker
7	Auto Body Painter and Repair	47	Healthcare IT Support Technician
8	Baker/ Pastry Chef	48	Hospitality Manager
9	Bookkeeper/ Payroll Clerk	49	Human Resources/ Personnel Clerk
10	Building Inspector/ Technician	50	Human Services Worker/ Social Worker
11	Butcher/Meat Cutter	51	HVAC Mechanic and Installer
12	Carpenter	52	Information Clerk
13	Cement Mason	53	Interior Design/Universal Design
14	Chemical Technician	54	Interpreter/Translator
15	Child Care Worker	55	Laboratory Science Assistant/ Technician
16	Clean Diesel Technology Occupations	56	Landscape Designer
17	Community Health Worker	57	Legal Assistant/ Secretary/ Support Worker
18	Computer Graphics Technician	58	Library Technician
19	Computer Network Support Specialist	59	Licensed Vocational Nurse (LVN/LPN)**
20	Computer Network Systems Analyst	60	Maintenance Mechanic
21	Computer Programmer/Aide	61	Marketing Manager
22	Construction Worker/ Laborer/ Manager	62	Mechanical/ Electrical Technician
23	Cook, Restaurant	63	Mechanic: Agricultural, Auto, Motorcycle & RV
24	Correctional Officer	64	Mechatronics Engineer
25	Cosmetologist/Nail Tech	65	Medical Assistant
26	Customer Service Representative	66	Medical Laboratory Worker/ Phlebotomist
27	Dental Assistant**	67	Medical Office Specialist
28	Dental Hygienist **	68	Medical Records/ Health Information Tech.
29	Diagnostic Medical Sonographer	69	Nutritionist
30	Dietician/ Dietary Technician	70	Occupational Therapy Assistant **
31	Electrician	71	Office Administrator/ Manager
32	Electronic/ Electrical Technician/Telecom	72	Office Assistant/ Computer Applications Worker
33	Elementary/ Secondary School Teacher	73	Office Information Systems Worker
34	EMT/Paramedic	74	Paralegal
35	Energy Auditor	75	Pharmacy Technician
36	Engineering Technician	76	Physical Therapy Aide/ Assistant **
37	Environmental Analyst	77	Police & Sheriff Patrol Officer
38	Environmental Engineering Technician	78	Pre-School Teacher/ Aide
39	Fire Control Technician/ Fire Technologist	79	Psychiatric Technician/ Assistant
40	Firefighter	80	Public Relations Specialist



G=Green Occupations  
 D = Degree  
 C = Certificate  
 DT = Degree for Transfer  
 Colleges may offer coursework even if a degree/certificate is not indicated.  
 Consult an academic counselor/ advisor.

**\*\*Consult with a County Vocational Assessment Counselor for Occupational options, Specialized Assessments, Labor Market Information & planning recommendations.**

<b>AO Code</b>	<b>Approved Occupations</b>
81	Radiologic Technician **
82	Receptionist/ Information Clerk
83	Recreation Manager
84	Respiratory Therapist/ Aide**
85	Registered Nurse (RN)**
86	Sales Representative
87	Security and Fire Alarm Systems Technician
88	Security Officer/ Guard
89	Sign Language Interpreter
90	Solar Systems Design, Estimation & Sales
91	Solar Technology Occupations
92	Surgical Technologist
93	Teacher Assistant
94	Truck Driver/ Bus Driver
95	Water/Wastewater Management
96	Water & Wastewater Treatment Plant Operation
97	Welder/ Metal Crafts/ Metal Industry Technician

G=Green Occupations  
 D = Degree  
 C = Certificate  
 DT = Degree for Transfer  
 Colleges may offer coursework even if a degree/certificate is not indicated.  
 Consult an academic counselor/advisor.

**\*\*Consult with a County Vocational Assessment Counselor for Occupational options, Specialized Assessments, Labor Market Information & planning recommendations.**

## Approved Programs of Study

Programs of Study	Sac County AO Code	Yolo County AO Code	ARC	CRC	FLC	SCC
Accounting - Payroll Practitioner	2	1	C	-	-	-
Accounting - Taxation	2	1	C	C	-	-
Accounting - Tax Specialist I	2	1	C	-	-	-
Accounting - Tax Specialist II	2	1	C	-	-	-
Accounting - Full Charge Bookkeeper	3	2	-	-	-	C
Administration of Justice	46, 156, 171	24, 88	D/DT	-	D/DT	D/DT
Advertising - Public Relations	4, 159	4, 80	-	D	-	-
Advertising & Marketing	4	3	-	-	D	D
Advertising & Sales Promotion (see also: Marketing)	4, 124	3, 61	D	-	D	-
Aeronautics - Air Traffic Control	7	-	-	-	-	D
Aeronautics - Aircraft Dispatcher	7	-	-	-	-	D/C
Aeronautics - Airframe	16	-	-	-	-	D/C
Aeronautics - Combined Airframe and Powerplant	16	-	-	-	-	D/C
Aeronautics - Flight Technology	7, 16	-	-	-	-	D/C
Aeronautics - Nondestructive Testing	16	-	-	-	-	D/C
Aeronautics - Powerplant	16	-	-	-	-	D/C
Agriculture - General	6	-	-	D	-	-
Agriculture - Business	5	-	-	D/C	-	-
American Sign Language (ASL) - English Interpreter Preparation	108, 173	54, 89	D/C	-	-	-
American Studies - Interdisciplinary Studies	104, 181, 182	78, 33, 93	-	D	D	D
Anthropology	181	33	D/DT	D/DT	-	D/DT
Apprenticeship (Certain requirements limit enrollment, please refer to college catalog)	28, 44, 64, 65, 152, 154	28, 12, 31, 32	D/C	-	-	-
Architectural Design Technology - Building Information Modeling	9	-	-	D/C	-	-
Architectural Design Technology - Interior Building Architecture	9	-	-	D/C	-	-
Architectural/Structural Drafting	9	-	-	-	-	D/C
Architecture	9	-	-	D	-	-

G=Green Occupations  
D = Degree  
C = Certificate  
DT = Degree for Transfer  
Colleges may offer coursework even if a degree/certificate is not indicated.  
Consult an academic counselor/advisor.

**\*\*Consult with a County Vocational Assessment Counselor for Occupational options, Specialized Assessments, Labor Market Information & planning recommendations.**

Programs of Study	Sac County AO Code	Yolo County AO Code	ARC	CRC	FLC	SCC
<b>Architecture - Architectural Technology</b>	9	-	-	C	-	-
<b>Architecture - Green Buildings: Environmental Design, Energy Management, and Performance-Based Construction</b>	9	-	-	C	-	-
<b>Art New Media</b> (see also: Graphic Design, Illustration, 3D, Web Design, Technical Communications)	35, 37, 199	18	D	-	-	D/C
<b>ASL - English Interpreter Preparation Program</b>	108, 173	54, 89	D/C	-	-	-
<b>Automotive Collision Technology</b>	11	7	D/C	-	-	-
<b>Automotive Mechanics Technology</b>	125	63	D/C	D	-	-
<b>Automotive Mechanics Technology - Automotive Brakes</b>	125	63	C	-	-	-
<b>Automotive Mechanics Technology - Automotive Electrical Systems</b>	125	63	C	-	-	-
<b>Automotive Mechanics Technology - Automotive Emission Control</b>	125	63	C	-	-	-
<b>Automotive Mechanics Technology - Automotive Engine Performance</b>	125	63	C	C	-	-
<b>Automotive Mechanics Technology - Automotive Engine Repair</b>	125	63	C	-	-	-
<b>Automotive Mechanics Technology - Automotive Heating &amp; Air Conditioning</b>	125	63	C	-	-	-
<b>Automotive Mechanics Technology - Automotive Suspension &amp; Steering</b>	125	63	C	-	-	-
<b>Automotive Mechanics Technology - Small Engine Repair</b>	125	63	C	-	-	-
<b>Automotive Technology</b>	12, 13, 191	-	D/C	-	-	-
<b>Automotive Technology - Air Conditioning Service</b>	13, 125	63	C	-	-	-
<b>Automotive Technology - Alternative Fuels &amp; Green Vehicle Technology</b>	125	63	C	-	-	-
<b>Automotive Technology - Automatic Transmissions/Transaxles</b>	125	63	C	-	-	-
<b>Automotive Technology - Automotive Analysis</b>	13	-	D/C	-	-	-

G=Green Occupations  
D = Degree  
C = Certificate  
DT = Degree for Transfer  
Colleges may offer coursework even if a degree/certificate is not indicated.  
Consult an academic counselor/advisor.

\*\*Consult with a County Vocational Assessment Counselor for Occupational options, Specialized Assessments, Labor Market Information & planning recommendations.

Programs of Study	Sac County AO Code	Yolo County AO Code	ARC	CRC	FLC	SCC
<b>Automotive Technology - Automotive Component Service Technician</b>	13, 125	63	D/C	-	-	-
<b>Automotive Technology - Automotive Service Technician</b>	12, 125	63	C	-	-	-
<b>Automotive Technology - Extreme Tuner</b>	125	63	C	-	-	-
<b>Automotive Technology - Parts &amp; Service</b>	13, 125	63	C	-	-	-
<b>Automotive Technology - Undercar Service</b>	13, 125	63	C	-	-	-
<b>Biology</b>	150, 181	33	-	-	-	D
<b>Biology - Biological Science</b>	111, 133	55	D	D	D	D
<b>Biology - Field Ecology</b>	72	37	-	-	-	C
<b>Biology - Health Science/Pre-Professional Option</b>	111, 133	55	D	D	D	-
<b>Biology - Pre Nursing Option</b>	133	-	D	D	D	-
<b>Biotechnology</b>	111	55	D/C	-	-	-
<b>BIT - Building Inspection Technology</b>	21	10	D/C	D/C	-	-
<b>BIT - Concrete Construction Inspection</b>	21	10	C	-	-	-
<b>Broadcast Journalism</b>	35	-	D	D	-	-
<b>Business - Administrative Assistant</b>	3, 24, 39, 74, 75, 102, 106, 120, 121, 130, 137, 140, 145, 147, 157, 169, 186, 202	2, 71, , 72, 49, 86	-	-	D	-
<b>Business - Business Administration</b>	3, 39, 74, 75, 102, 106, 120, 121, 130, 137, 140, 145, 147, 157, 169, 186, 202	2, 71, , 72, 49, 86	D/DT	-	D/DT	D/DT
<b>Business - Business Administrative Professional</b>	3, 24, 39, 74, 75, 102, 106, 120, 121, 130, 137, 140, 147, 157, 169, 186, 202	2, 71, , 72, 49, 86	D	D	-	-
<b>Business - Business, General</b>	3, 8, 24, 26, 29, 32, 33, 39, 47, 49, 50, 74, 75, 88, 102, 106, 120, 129, 132, 137, 138, 139, 140, 143, 145, 147, 157, 160, 169, 172, 185, 186, 190, 201, 202	2, 71, 72, 49, 86	D/C	D	D/DT	D/C

G=Green Occupations  
D = Degree  
C = Certificate  
DT = Degree for Transfer

Colleges may offer coursework even if a degree/certificate is not indicated.  
Consult an academic counselor/advisor.

**\*\*Consult with a County Vocational Assessment Counselor for Occupational options, Specialized Assessments, Labor Market Information & planning recommendations.**

Programs of Study	Sac County AO Code	Yolo County AO Code	ARC	CRC	FLC	SCC
<b>Business -- Customer Service</b>	50	26	-	-	-	C
<b>Business - E-Business and the Internet</b>	3, 24, 39, 50, 75, 102, 106, 120, 132, 147, 169, 172, 186, 190, 201, 202	2, 71, , 72, 49, 86	C	-	-	-
<b>Business - Law Office Clerical Assistant</b>	24, 32, 39, 49, 74, 102, 114, 138, 143, 160, 169, 202	2, 71, , 72, 49, 86	C	-	-	-
<b>Business - Management</b>	8, 24, 79, 102, 110, 137, 140, 186	2, 71, , 72, 49, 86	-	-	-	D/C
<b>Business - Marketing, Advertising</b>	201	86	-	-	-	D/C
<b>Business - Office Administration: Business Operations and Management Technology</b>	3, 8, 24, 32, 39, 74, 75, 106, 120, 121, 130, 137, 140, 147, 169, 186, 201	2, 71, , 72, 49, 86	-	-	-	D/C
<b>Business - Office Administration: Clerical General Office</b>	3, 24, 32, 39, 49, 50, 74, 106, 138, 139, 147, 160, 169, 172, 185, 186, 202	2, 71, , 72, 49, 86	-	-	-	C
<b>Business - Office Administration: Computer Keyboarding and Office Applications</b>	3, 24, 32, 39, 49, 74, 75, 102, 106, 120, 121, 129, 130, 137, 138, 147, 160, 169, 172, 185, 186, 201, 202	2, 71, , 72, 49, 86	-	-	-	C
<b>Business - Office Administration: Intro Computerized Office Technologies</b>	3, 24, 26, 32, 39, 49, 74, 75, 102, 106, 120, 121, 129, 130, 137, 138, 139, 140, 145, 147, 160, 169, 172, 186, 201, 202	2, 71, , 72, 49, 86	-	-	-	C
<b>Business - Office Administration: Virtual Office &amp; Management Technologies</b>	3, 8, 24, 32, 39, 74, 75, 102, 106, 120, 121, 137, 139, 140, 147, 169, 186	2, 71, , 72, 49, 86	-	-	-	D/C
<b>Business - Office Assistant</b>	3, 24, 29, 32, 39, 50, 74, 102, 106, 130, 138, 139, 145, 147, 160, 169, 185, 186, 190, 202	2, 71, , 72, 49, 86	C	C	-	-
<b>Business - Office Technician</b>	3, 24, 32, 39, 50, 74, 106, 129, 139, 141, 147, 160, 169, 172, 186, 202	2, 71, , 72, 49, 86	C	C	C	-

G=Green Occupations

D = Degree

C = Certificate

DT = Degree for Transfer

Colleges may offer coursework even if a degree/certificate is not indicated.

Consult an academic counselor/advisor.

**\*\*Consult with a County Vocational Assessment Counselor for Occupational options, Specialized Assessments, Labor Market Information & planning recommendations.**

Programs of Study	Sac County AO Code	Yolo County AO Code	ARC	CRC	FLC	SCC
<b>Business - Office Technology</b>	3, 24, 32, 39, 49, 50, 74, 102, 106, 121, 129, 130, 137, 138, 139, 140, 147, 160, 169, 186, 190, 202	2, 71, , 72, 49, 86	C	-	-	-
<b>Business - Retail Management</b>	4, 132, 166, 167, 168, 190	3, 85, 86	-	-	-	C
<b>Business -- Small Business Management</b>	4, 17, 19, 30 32, 35, 50, 52, 145, 160, 168, 172	3, 1, 9, 72, 26, 82, 85	-	-	-	D/C
<b>Business - Small Business Management/Entrepreneurship</b>	8, 24, 33, 39, 47, 49, 74, 75, 79, 102, 106, 120, 121, 132, 137, 138, 139, 140, 147, 169, 186, 190, 201	72, 9, 22, 49, 71, 73, 86	D/C	C	D/C	D/C
<b>Business - Technical Communications (see also Art New Media or CIS)</b>	24, 32, 39, 50, 74, 120, 121, 129, 130, 137, 138, 139, 160, 169, 186	72, 26, 71, 73, 82, 86	D/C	-	-	-
<b>Business - Virtual Office Professional</b>	24, 32, 39, 50, 74, 102, 106, 120, 121, 129, 130, 137, 140, 147, 160, 169, 186	71, 72, 26, 49, 82, 86	C	-	-	-
<b>Business Administration</b>	3, 8, 24, 32, 39, 74, 102, 106, 120, 121, 137, 140, 147, 169, 186, 201	2, 72, 49, 71, 86	DT	D	DT	D/DT
<b>Business Technology: Virtual Administrative Professional</b>	3, 24, 39, 74, 75, 102, 120, 121, 129, 130, 137, 140, 147, 169, 186	2, 71, 72, 49, 86	D	-	-	-
<b>Business Transfer</b>	24	72	D	-	DT	-
<b>Chemical Technology</b>	111, 127	55, 66	-	-	-	D/C
<b>Chemistry</b>	111, 127, 181	55, 7C66, 7C33	D	D	-	D
<b>CIS - Active Server Pages Developer</b>	42	20	-	-	-	C
<b>CIS - Computer Programming</b>	42	20	D/C	-	C	C
<b>CIS - Computer Programming - SQL</b>	42	20	C	C	C	-
<b>CIS - Computer Science</b>	42	20	D	D	D	D/C
<b>CIS - Database Analyst - SQL</b>	42	20	C	-	-	-
<b>CIS - Database Design</b>	42	20	C	C	-	-



G=Green Occupations  
D = Degree  
C = Certificate  
DT = Degree for Transfer  
Colleges may offer coursework even if a degree/certificate is not indicated.  
Consult an academic counselor/advisor.

**\*\*Consult with a County Vocational Assessment Counselor for Occupational options, Specialized Assessments, Labor Market Information & planning recommendations.**

Programs of Study	Sac County AO Code	Yolo County AO Code	ARC	CRC	FLC	SCC
CIS - Desktop Publishing	37	18	C	C	-	-
CIS - Information Processing	40, 139, 147	73	-	-	-	D/C
CIS - Information Processing Specialist	137, 147, 169	71	-	-	-	C
CIS - Information Processing Technician	32, 37, 39, 91, 139	72, 18, 47, 73	-	-	-	C
CIS - Information Systems Security	139	73	D/C	D/C	-	D/C
CIS - Linux System Administrator	42	20	C	-	-	-
CIS - Management Information Science/Systems	36, 42, 199	20	D	D	-	D/C
CIS - Network Helpdesk Technician	39	72	C	C	-	-
CIS - Programming-C/C++	39	72	C	C	-	C
CIS - Relational Database Administration	39	72	C	C	C	-
CIS - Server Administrator	39	72	D/C	C	-	-
CIS - Web Production Specialist	199	-	-	-	-	C
CIS - Web Programming	39, 42	72, 20	C	C	-	-
CIS - Web Publishing	39, 42	72, 20	C	-	-	-
Commercial Building Energy Auditing and Commissioning Specialist	70	35	-	-	-	C
Communication	35, 60, 102, 110, 159, 186	49, 80, 86	-	-	C/DT	D
Communication - Applied Communication Skills	35, 60, 102, 110, 159, 186	49, 80, 86	C	-	-	-
Communication - Organizational Communication	35, 60, 102, 110, 159, 186	49, 80, 86	D	D	-	DT
Communication Studies	35, 60, 102, 110, 159, 186	49, 80, 86	DT	-	C/DT	DT
Community Studies	131, 158, 174	79	-	-	-	D/C
Construction	21, 22, 44, 47, 70, 82, 87, 95, 105, 112, 117, 142, 152, 197	10, 22, 35	D/C	D	-	-
Construction - Construction Building Performance and Energy Assessment	21, 22, 47, 70, 105, 152	10, 35, 22	D/C	D	-	-
Construction - Pre-Apprenticeship	22, 44, 82, 87, 95, 105, 112, 117, 142, 152	10, 22, 22	C	-	-	-
Construction Management Technology	197	-	D/C	D/C	-	D
Cosmetology	89	25	-	-	-	D/C

G=Green Occupations  
D = Degree  
C = Certificate  
DT = Degree for Transfer  
Colleges may offer coursework even if a degree/certificate is not indicated.  
Consult an academic counselor/advisor.

**\*\*Consult with a County Vocational Assessment Counselor for Occupational options, Specialized Assessments, Labor Market Information & planning recommendations.**

Programs of Study	Sac County AO Code	Yolo County AO Code	ARC	CRC	FLC	SCC
<b>Cosmetology - Nail Technology</b>	122	-	-	-	-	C
<b>Culinary - Basic Culinary Services</b>	20, 25, 34, 43, 45, 59, 80, 196	8, 11, 48, 41, 42	C	-	-	-
<b>Culinary - Community Nutrition Specialist</b>	57, 134	30, 69	C	C	-	-
<b>Culinary - Cooking and Supervision</b>	34, 43, 45, 48, 80, 196	48, 41, 42	C	C	-	-
<b>Culinary - Introductory Baking (see also: Hospitality Management)</b>	20	8	C	-	-	-
<b>Culinary - Restaurant Management (see also: Hospitality Management)</b>	34, 48, 80	48, 41	C	-	-	-
<b>Culinary - School Foodservice Specialist</b>	34, 48, 59, 80, 196	48, 41, 42	C	C	-	-
<b>Culinary Arts Management</b>	20, 25, 34, 45, 80	8, 11, 48, 41	D	D	-	-
<b>Culinary Arts Restaurant Management (see also: Hospitality Management)</b>	45, 80	48, 41	D/C	-	-	-
<b>Deaf Culture &amp; American Sign Language Studies</b>	108, 173	54, 89	D/C	-	-	-
<b>Dental Assisting</b>	53, 54	27, 28	-	-	-	D/C
<b>Dental Hygiene</b>	54	28	-	-	-	D
<b>Design &amp; Engineering Technology - Design Technology (see also: Engineering)</b>	61, 71	36	D/C	-	-	-
<b>Design &amp; Engineering Technology - Engineering Technology (see also: Engineering)</b>	61, 71	36	D/C	-	-	-
<b>Diagnostic Medical Sonography</b>	176	91	D/C	D/C	-	-
<b>Diesel/Clean Diesel - Clean Diesel Technology</b>	56	-	C	-	-	-
<b>Diesel/Clean Diesel - Diesel Technology</b>	56	-	D/C	-	-	-
<b>Diesel/Clean Diesel - Preventive Maintenance</b>	56	-	C	-	-	-
<b>Digital Media</b>	37, 58	18	D/C	D/C	-	-
<b>Early Childhood Education</b>	31, 63, 155, 181, 182	-	D/DT	D	D/DT	DT
<b>Early Childhood Education - Administration</b>	31, 63	15	-	-	-	D

G=Green Occupations  
D = Degree  
C = Certificate  
DT = Degree for Transfer  
Colleges may offer coursework even if a degree/certificate is not indicated.  
Consult an academic counselor/advisor.

**\*\*Consult with a County Vocational Assessment Counselor for Occupational options, Specialized Assessments, Labor Market Information & planning recommendations.**

Programs of Study	Sac County AO Code	Yolo County AO Code	ARC	CRC	FLC	SCC
Early Childhood Education - Assistant Teacher	31, 63, 155, 181, 182	15, 78, 33, 93	C	-	-	-
Early Childhood Education - Associate Teacher	31, 63, 155, 181, 182	15, 78, 33, 93	C	C	-	-
Early Childhood Education - Child Development	31, 63, 155	15, 78	-	-	-	D
Early Childhood Education - Culture and Diversity Specialist	31, 63, 155	15, 78	C	-	-	-
Early Childhood Education - Family Child Care	31, 63	15	C	-	-	C
Early Childhood Education - Home Early Care and Education	31, 63, 155	15, 78	C	-	-	-
Early Childhood Education - Infant Care and Education Teacher	31, 63, 155, 181, 182	15, 78, 33, 93	-	-	-	C
Early Childhood Education - Infant Specialist	31, 63, 155	15, 78	C	C	C	-
Early Childhood Education - Management Specialist	31, 63	15	C	C	-	-
Early Childhood Education - Master Teacher	31, 63, 155, 181	15, 78, 33,	C	C	C	-
Early Childhood Education - School Age	31, 63, 155	15, 78	C	-	-	-
Early Childhood Education - School Age Care and Education	31, 63, 155	15, 78	C	C	-	-
Early Childhood Education - School Age Care and Education Teacher	31, 63, 155, 181, 182	15, 78, 33, 93	-	C	-	C
Early Childhood Education - School Age Specialist	31, 63, 155, 181, 182	15, 78, 33, 93	-	-	C	-
Early Childhood Education - Site Supervisor	31, 63, 155	15, 78	C/D	D	D/C	-
Early Childhood Education - Teacher	31, 63, 155, 181, 182	15, 78, 33, 93	C	-	C	D
Education/Teaching	181, 182	33, 93	D/DT	-	-	D/DT
Electronics Facilities Maintenance Technician	65, 66, 67, 170, 183, 184	32, 87	-	-	-	D/C
Electronics Mechanic	65, 66, 67, C70, 73, 119, 123, 126, 200	32, 35, 62, 60, 97	-	-	-	C
Electronics Technology - Advanced Electronics and Telecommunications	40, 65, 66, 67, 68, 70, 73, 123, 126, 170, 175, 183, 184, 200	32, 35, 32, 87, 97	C	-	-	-

G=Green Occupations

D = Degree

C = Certificate

DT = Degree for Transfer

Colleges may offer coursework even if a degree/certificate is not indicated.

Consult an academic counselor/ advisor.

**\*\*Consult with a County Vocational Assessment Counselor for Occupational options, Specialized Assessments, Labor Market Information & planning recommendations.**

Programs of Study	Sac County AO Code	Yolo County AO Code	ARC	CRC	FLC	SCC
<b>Electronics Technology - Automated Systems Technician</b>	40, 65, 67, 73, 170	32, 62, 87	-	-	-	D/C
<b>Electronics Technology - Basic Electronics and Telecommunications</b>	40, 65, 66, 67, 68, 73, 119, 170, 183, 184, 200	32, 62, 60, 87, 97	C	-	-	-
<b>Electronics Technology - Biomedical Equipment Technology</b>	40, 65, 66, 67, 73, 200	32, 62, 97	C	-	-	-
<b>Electronics Technology - Digital Home Technology Integration</b>	65, 66, 67, 68, 170, 184, 200	32, 87, 97	C	-	-	-
<b>Electronics Technology - Digital Repair &amp; Upgrade Technician</b>	40, 65, 66, 67, 68, 170, 183, 184, 200	32, 87, 97	C	-	-	-
<b>Electronics Technology - Electronic Systems Technology</b>	40, 65, 66, 67, 68, 70, 73, 119, 170, 175, 183, 200	32, 35, 62, 60, 97	D/C	-	-	-
<b>Electronics Technology - Fiber Optics</b>	65, 66, 67, 68, 170, 175, 183, 184	32, 87	C	-	-	-
<b>Electronics Technology - Mechatronics</b>	65, 66, 67, 73, 119, 123, 126	32, 62, 60	D/C	-	-	-
<b>Electronics Technology - Microcomputer Technician</b>	40, 65, 66, 67	32	-	-	-	D/C
<b>Electronics Technology - Robotics</b>	65, 66, 67, 123, 126	32	C	-	-	-
<b>Electronics Technology - Telecommunication Specialist</b>	65, 67, C170, 183, 184	32, 87	C	-	-	-
<b>Electronics Technology - Telecommunication Technician</b>	65, 67, C170, 183, 184	32, 87	-	-	-	D/C
<b>Emergency Medical Technology (see also: Paramedic)</b>	69, 144	34	C	-	C	-
<b>Energy - Solar Energy Systems Design, Estimation and Sales</b>	175	-	C	-	-	-
<b>Energy - Solar Energy Technology</b>	175	-	C	-	-	-
<b>Engineering - Civil</b>	61, 71	36	-	-	-	D
<b>Engineering - Civil/Mechanical</b>	61, 71, 94	36, 62	D	D	-	-
<b>Engineering - Civil Engineering</b>	61, 71, 94	36, 62	D	-	-	-
<b>Engineering - Electrical/Computer</b>	61, 71	36	D	D	-	D
<b>Engineering - General</b>	61, 71	36	-	-	-	D
<b>Engineering - Mechanical/Aeronautical</b>	61, 71, 94	36, 62	-	-	-	D
<b>Engineering Design Technology - Electric (Power-Lighting Systems)</b>	61, 71	36	-	-	-	D/C

G=Green Occupations  
D = Degree  
C = Certificate  
DT = Degree for Transfer  
Colleges may offer coursework even if a degree/certificate is not indicated.  
Consult an academic counselor/advisor.

**\*\*Consult with a County Vocational Assessment Counselor for Occupational options, Specialized Assessments, Labor Market Information & planning recommendations.**

Programs of Study	Sac County AO Code	Yolo County AO Code	ARC	CRC	FLC	SCC
Engineering Design Technology - HVAC Systems Design	61	36	-	-	-	D/C
Engineering Design Technology - Mechanical (HVAC/Plumbing Systems)	61	36	-	-	-	D/C
Engineering Design Technology - Surveying (Geomatics)	61	36	-	-	-	D/C
Engineering Design Technology (see also: Design & Engineering)	61, 71	36	D/C	-	-	D/C
Environmental Studies and Sustainability	72, 81, 162	37	D	-	-	-
Ethnic Studies	102, 103, 110, 147	49, 50	-	-	-	D
Ethnic Studies - African-American Emphasis	102, 103, 110, 147	49, 50	-	-	-	D
Ethnic Studies - Asian-American Emphasis	102, 103, 110, 147	49, 50	-	-	-	D
Ethnic Studies - Mexican-American Emphasis	102, 103, 110, 147	49, 50	-	-	-	D
Ethnic Studies - Native-American Emphasis	102, 103, 110, 147	49, 50	-	-	-	D
Family & Consumer Science	102, 103, 110, 147	49, 50	-	-	-	D
Fashion - Apparel Construction	102, 103, 110, 147	49, 50	C	-	-	-
Fashion - Applied Apparel Studies Construction	102, 103, 110, 147	49, 50	-	-	-	D/C
Fashion - Entrepreneur	166, 167, 168	85	C	-	-	-
Fashion Merchandising	132, 166, 167, 168, 201	85, 86	D/C	-	-	-
Fire Technology	76, 77, 78, 90	39, 40, 51	D/C	D/C	D/C	-
Fire Technology - Fire Investigation (1A, 1B, 2A, 2B)	76, 77, 78, 90	39, 40, 51	C	-	-	-
Fire Technology - Fire Management 1	76, 77, 78, 90	39, 40, 51	C	-	-	-
Fire Technology - USDA Advanced Academy	76, 77, 78, 90	39, 40, 51	C	-	-	-
Fire Technology - USDA Basic Academy	76, 77, 78, 90	39, 40, 51	C	-	-	-
Foreign Languages - Spanish	21, 26, 50, 153, 174, 180, 187	10, 72, 26, 77,	DT	-	-	D/DT
Funeral Service Education	83	-	D	-	-	-

G=Green Occupations  
D = Degree  
C = Certificate  
DT = Degree for Transfer  
Colleges may offer coursework even if a degree/certificate is not indicated.  
Consult an academic counselor/ advisor.

**\*\*Consult with a County Vocational Assessment Counselor for Occupational options, Specialized Assessments, Labor Market Information & planning recommendations.**

Programs of Study	Sac County AO Code	Yolo County AO Code	ARC	CRC	FLC	SCC
Gerontology	27, 86, 97	50, 43	-	-	D/C	D/C
Gerontology - Business	27, 86, 97	50, 43	D/C	-	-	-
Gerontology - Case Mgmt./Social Services	27, 86, 97	50, 43	D/C	-	-	-
Gerontology - Dementia Care	27, 86, 97	50, 43	C	-	-	-
Gerontology - Elder Care	27, 86, 97	50, 43	C	-	-	-
Gerontology - Environmental Design	86	43	D/C	-	-	-
Gerontology - Ethnicity and Aging	27, 86, 97	50, 43	C	-	-	-
Gerontology - Health Care	27, 86, 97	50, 43	D/C	-	-	-
Gerontology - Leadership in Assisted Living Communities	27, 86, 97	50, 43	C	-	-	-
Gerontology - Recreation	27, 86, 97	50, 43	D/C	-	-	-
Gerontology - Social Policy/Advocacy	86, 97	43	D/C	-	-	-
Gerontology - Social Service Designee	27, 86, 97	50, 43	C	-	-	-
Health Care Information Technology - Implementation Support Specialist	91, 92	47	C	C	-	-
Health Care Information Technology - Technical Support Specialist	91, 92	47	C	C	-	-
Health Care Information Technology - Trainer	91, 92	47	C	-	-	-
Health Information Coding Specialist	91, 92, 128, 129	47, 68	C	C	-	-
Health Information Technology	91, 92, 128, 129, 130	47, 69	D	D/DT	-	-
Healthcare Interpreting	91, 92, 128, 129, 130	47, 68	C	-	-	-
Horticulture	85, 98, 113, 148	45, 56	D/C	-	-	-
Horticulture - Floristry	85, 98, 113, 148	45, 56	C	-	-	-
Horticulture - Landscape Design	85, 98, 113, 148	45, 56	C	-	-	-
Horticulture - Landscape Design Technology	85, 98, 113, 148	45, 56	D/C	-	-	-
Horticulture - Landscape Technology	85, 98, 113, 148	45, 56	D/C	D/C	-	-
Horticulture - Nursery Management	85, 98, 113, 148	45, 56	D	D	-	-
Horticulture - Nursery Operations	85, 98, 113, 148	45, 56	C	C	-	-
Horticulture - Plant Production	85, 113	45, 56	C	-	-	-



G=Green Occupations  
D = Degree  
C = Certificate  
DT = Degree for Transfer  
Colleges may offer coursework even if a degree/certificate is not indicated.  
Consult an academic counselor/advisor.

**\*\*Consult with a County Vocational Assessment Counselor for Occupational options, Specialized Assessments, Labor Market Information & planning recommendations.**

Programs of Study	Sac County AO Code	Yolo County AO Code	ARC	CRC	FLC	SCC
<b>Horticulture - Sustainable Irrigation &amp; Water Management</b>	85, 113, 148	45, 56	C	-	-	-
<b>Horticulture - Sustainable Landscape</b>	85, 98, 113, 148	45, 56	C	-	-	-
<b>Horticulture - Sustainable Landscape &amp; Irrigation Systems Design</b>	85, 98, 113	45, 56	D/C	D/C	-	-
<b>Horticulture Skills</b>	85, 113, 148	45, 56	C	-	-	-
<b>Hospitality Management - Culinary Arts/Restaurant Management (see also: Culinary)</b>	20, 25, 34, 43, 45, 48, 59, 80, 99, 100, 101, 109, 118, 196	8, 11, 48, 41, 42	D/C	-	-	-
<b>Hospitality Management - Introductory Baking (see also: Culinary)</b>	20, 34, 43, 45, 80, 101, 196	8, 48, 41, 42	C	-	-	-
<b>Hospitality Management - Restaurant Management (see also: Culinary)</b>	20, 25, 34, 43, 45, 48, 59, 80, 99, 100, 101, 109, 196	8, 11, 48, 41, 42	C	-	-	-
<b>Human Services</b>	27, 96, 103, 131, 158, 174	50, 50, 79	D/C	D/C	D/C	-
<b>Human Services - Chemical Dependency Studies</b>	103, 131, 158, 174	50, 79	D/C	D/C	-	-
<b>Humanities</b>	181	33	-	-	D	D
<b>Instructional Assisting - Bilingual-Bicultural</b>	104, 181, 182	78, 33, 93	-	-	-	D/C
<b>Instructional Assisting - General</b>	104, 181, 182	78, 33, 93	-	-	-	D/C
<b>Instructional Assisting - Special Education</b>	104, 181, 182	78, 33, 93	-	-	-	D/C
<b>Interdisciplinary Studies - Environmental Literacy</b>	72	37	-	-	-	D
<b>Interdisciplinary Studies - Math and Science</b>	63, 93, 128, 181	15, 65, 68, 33	-	-	-	D
<b>Interdisciplinary Studies - Social and Behavioral Sciences</b>	24, 63, 103, 104, 143, 156, 159, 181	71, 72, 50, 78, 74, 79, 33	-	-	-	D
<b>Interior Design - Designed 4 Life</b>	107	53	C	-	-	-
<b>Interior Design - Green Building &amp; Sustainable Design for Interiors</b>	107	53	C	-	-	-
<b>Interior Design - Para-Professional Interior Planning &amp; Design</b>	107	53	C	-	-	-
<b>Interior Planning and Design</b>	107	53	D	-	-	-
<b>Interior Retail Merchandising</b>	107	53	C	-	-	-

G=Green Occupations  
D = Degree  
C = Certificate  
DT = Degree for Transfer  
Colleges may offer coursework even if a degree/certificate is not indicated.  
Consult an academic counselor/ advisor.

**\*\*Consult with a County Vocational Assessment Counselor for Occupational options, Specialized Assessments, Labor Market Information & planning recommendations.**

Programs of Study	Sac County AO Code	Yolo County AO Code	ARC	CRC	FLC	SCC
<b>Kinesiology</b>	150, 151, 181	76, 33	DT	DT	DT	DT
<b>Kinesiology &amp; Athletics - Coaching</b>	150, 151, 181	76, 33	-	-	-	C
<b>Kinesiology &amp; Athletics - Dance</b>	150, 151, 181	76, 33	D	-	-	D
<b>Kinesiology &amp; Athletics - Exercise Science</b>	150, 151, 181	76, 33	-	-	-	D
<b>Kinesiology &amp; Athletics - Fitness Instruction</b>	150, 151, 181	76, 33	C	-	-	C
<b>Kinesiology &amp; Athletics - Fitness Instructor</b>	150, 151, 181	76, 33	-	-	-	C
<b>Kinesiology &amp; Athletics - Physical Education</b>	150, 151, 181	76, 33	D	D	-	-
<b>Kinesiology &amp; Athletics - Sports Medicine</b>	150, 151, 181	76, 33	D	-	-	-
<b>Legal Assisting</b>	114, 143	57, 74	D/C	-	-	-
<b>Legal Assisting - Law Office Clerical Assistant</b>	114, 143	57, 74	C	-	-	-
<b>Liberal Arts</b>	23, 52, 62	-	D	-	-	-
<b>Liberal Arts - Communication and English Writing Emphasis</b>	23, 52, 62	-	-	D	-	D
<b>Liberal Arts - Social and Behavioral Sciences Emphasis</b>	23, 52, 62	-	-	D	-	D
<b>Library and Information Technology</b>	115	58	-	-	-	D/C
<b>Management</b>	79, 120, 121	72	D/C	D	D	-
<b>Management - Introduction to Leadership in Action</b>	79, 120, 121	72	C	-	-	-
<b>Management - Leadership</b>	79, 120, 121	72	D/C	-	-	-
<b>Management - Leadership in Action: Organizational Learning</b>	79, 120, 121	72	C	-	-	-
<b>Management - Leadership in Action: Organizational Systems</b>	79, 120, 121	72	C	-	-	-
<b>Management - Leadership in Action: Organizational Teams</b>	79, 120, 121	72	C	-	-	-
<b>Management - Leadership in Action: Organizational Variation</b>	79, 120, 121	72	C	-	-	-
<b>Management - Retail Management</b> (see also: Marketing or Retail Mgmt.)	79, 120, 121	72	D/C	C	-	C

G=Green Occupations  
 D = Degree  
 C = Certificate  
 DT = Degree for Transfer  
 Colleges may offer coursework even if a degree/certificate is not indicated.  
 Consult an academic counselor/advisor.

\*\*Consult with a County Vocational Assessment Counselor for Occupational options, Specialized Assessments, Labor Market Information & planning recommendations.

Programs of Study	Sac County AO Code	Yolo County AO Code	ARC	CRC	FLC	SCC
<b>Marketing</b>	4, 120, 132, 159, 166, 167, 168, 172, 190, 201	3, 80, 85, 86	D	D	D	-
<b>Marketing - Advertising &amp; Sales Promotion</b>	4, 120, 132, 159, 166, 167, 168, 172, 190, 201	3, 80, 85, 86	D	-	-	-
<b>Marketing - Retail Management</b> (see also: Management or Retail Mgmt.)	4, 79, 120, 132, 159, 166, 167, 168, 172, 190, 201	3, 80, 85, 86	D	-	-	-
<b>Marketing - Retail Management (WAFC)</b>	4, 79, 120, 132, 159, 166, 167, 168, 172, 190, 201	3, 80, 85, 86	C	-	-	-
<b>Mathematics</b>	41, 42, 181	20, 33	-	-	-	D/DT
<b>Mathematics &amp; Statistics - Physical Science &amp; Mathematics</b>	181	33	D	-	D/DT	-
<b>Mechanical - Electrical Technology</b>	73, 123, 126, 198	32, 62, 96	-	-	-	D/C
<b>Mechanical Systems Technician</b>	73, 94, 123, 126	32, 62	-	-	-	C
<b>Medical Administrative Assistant</b>	93, 141	65	C	C	-	-
<b>Medical Assisting</b>	93, 141, 178	65, 92	D/C	D/C	-	-
<b>Medical Assisting - Medical Insurance Billing</b>	93, 106	65	C	C	-	-
<b>Medical Laboratory Technician</b>	127, 141, 203	66, 66	-	-	D	-
<b>Nursing - CNA</b>	30, 96, 133, 146	50	C	-	-	-
<b>Nursing - Home Health Aide</b>	27, 30, 96, 97, 133, 146	50	C	-	-	-
<b>Nursing - LVN - 30-unit option</b>	116, 195	59	C	-	-	C
<b>Nursing - LVN to RN Career Mobility</b>	116, 163, 195	59, 85	D	-	-	D/C
<b>Nursing - RN</b>	163	85	D	-	-	D
<b>Nutrition &amp; Foods</b>	134	69	D	D	DT	D
<b>Nutrition &amp; Foods - Community Nutrition</b>	134	69	C	C	-	-
<b>Nutrition &amp; Foods - Dietary Manager/ Dietary Service Supervisor</b>	134	69	C	-	-	-
<b>Occupational Therapy Assistant</b>	135, 136	70	-	-	-	D
<b>Paramedic</b>	144	-	D/C	-	-	-
<b>Paramedic - Emergency Medical Technician</b> (see also: Emergency Medical Technology)	144	-	C	C	C	-

G=Green Occupations  
D = Degree  
C = Certificate  
DT = Degree for Transfer  
Colleges may offer coursework even if a degree/certificate is not indicated.  
Consult an academic counselor/ advisor.

**\*\*Consult with a County Vocational Assessment Counselor for Occupational options, Specialized Assessments, Labor Market Information & planning recommendations.**

Programs of Study	Sac County AO Code	Yolo County AO Code	ARC	CRC	FLC	SCC
Pharmacy Technology	149	75	D	D	-	-
Philosophy	181, 182	33, 93	DT	-	-	D/DT
Physical Therapist Assistant	150, 151	76	-	-	-	D
Psychology	131, 158, 174	79	D/DT	DT	D/DT	D/DT
Public Safety (certain requirements limit enrollment, please refer to college catalog)	81, 153	37, 77	C	-	-	-
Recreation	84, 161, 164, 187	83	D	-	-	-
Respiratory Care	165	84	D	-	-	-
Retail Management (see also: Marketing or Management)	132, 166, 167, 168, 190	85, 86	D	-	-	-
Sociology	131, 158, 174	79	DT	DT	D/DT	D/DT
Speech - Communication Studies	177	-	DT	-	-	-
Speech - Language Pathology - Language Pathology Assistant	177	-	D	-	-	-
Veterinary Technology	192, 193, 194	5	D/C	D/C	-	-
Wastewater Management	198	96	-	-	C	-
Water Management	198	96	-	-	C	-
Welding - Gas Metal Arc, Flux Cored Arc Welding Plate	200	97	C	-	-	-
Welding - Gas Tungsten Arc Plate & Pipe Welding	200	97	C	-	-	-
Welding - Shielded Metal Arc Plate and Pipe	200	97	C	-	-	-
Welding - Welding Code Specialist	200	97	C	-	-	-
Welding - Welding Fabricator Specialist	200	97	C	-	-	-
Welding - Welding Metallurgy and Inspection	200	97	C	-	-	-
Welding Equipment Maintenance and Blueprint Interpretation	200	97	C	-	-	-
Welding Technology	200	97	D/C	D/C	-	-